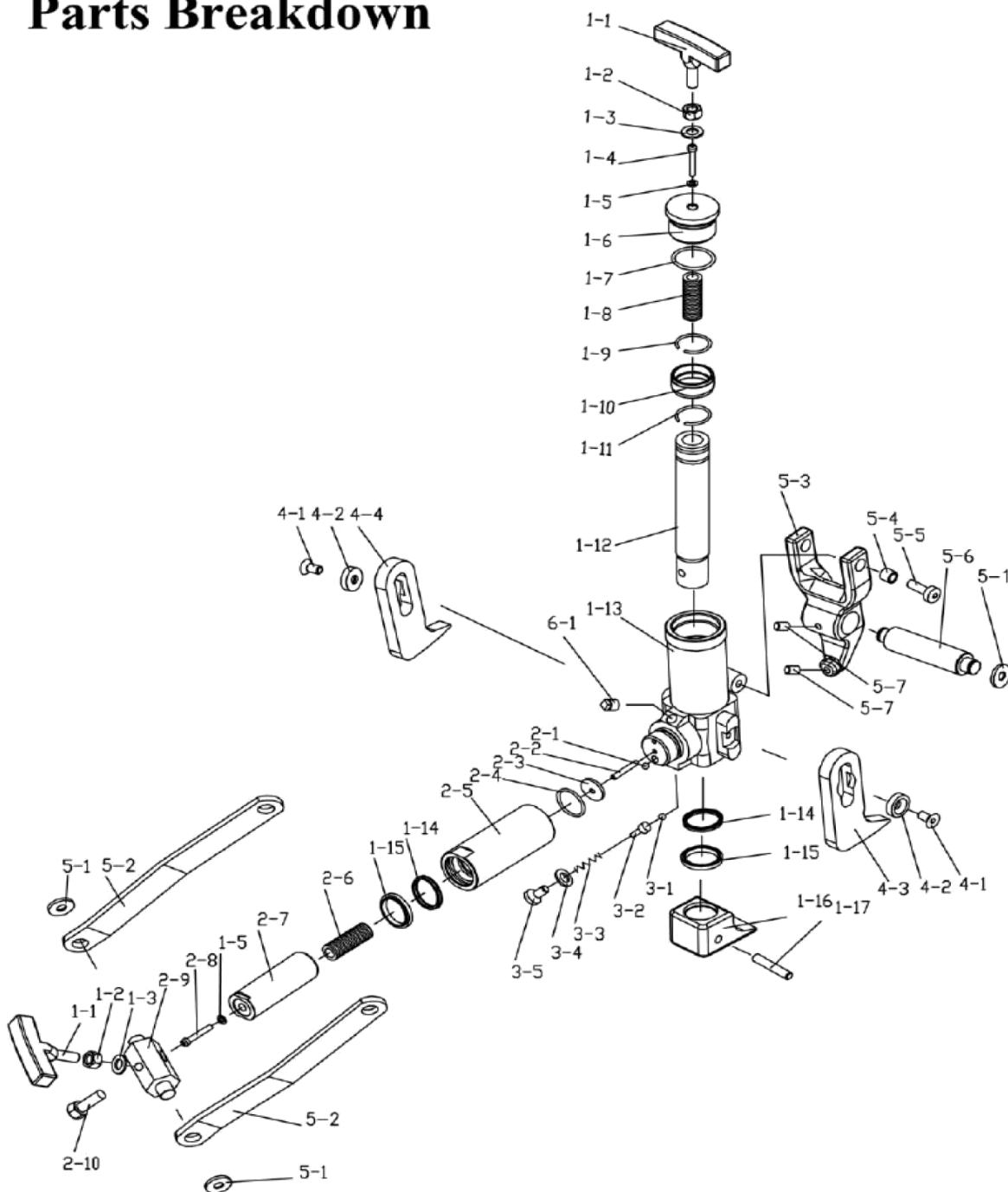




INSTRUCTION MANUAL

Parts List For Titan Tire Bead Breaker Model 11015

Parts Breakdown





INSTRUCTION MANUAL

Parts List For Titan Tire Bead Breaker Model 11015 (cont.)

Item No.	Part No	Description	Qty	Item No.	Part No	Description	Qty	Item No.	Part No.	Description	Qty
1-1	11015-001	Handle	2	1-16	11015-016	extrusion leg	1	3-4	11015-034	Ø12 Copper Washer	1
1-2	11015-002	M12 Nut	2	1-17	11015-017	pin	1	3-5	11015-035	M12x20 Screw	1
1-3	11015-003	Ø12 Washer	2	2-1	11015-021	Ø6 steel ball	1	4-1	11015-041	M10x15 Screw	2
1-4	11015-004	M5x50 Screw	1	2-2	11015-022	M6x30 Screw	1	4-2	11015-042	Busing	2
1-5	11015-005	Ø5 Copper Washer	2	2-3	11015-023	Washer	1	4-3	11015-043	Left Foot	1
1-6	11015-006	Cylinder Cap	1	2-4	11015-024	O Ring	1	4-4	11015-044	Right Foot	1
1-7	11015-007	O Ring	1	2-5	11015-025	cylinder	1	5-1	11015-051	Snap Ring	4
1-8	11015-008	Spring A	1	2-6	11015-026	Spring	1	5-2	11015-052	Connection Rod	2
1-9	11015-009	Snap Ring	1	2-7	11015-027	Piston Rod	1	5-3	11015-053	Claw	1
1-10	11015-010	Busing	1	2-8	11015-028	m5x70 Screw	1	5-4	11015-054	Bushing	2
1-11	11015-011	Snap Ring	1	2-9	11015-029	Joint Block	1	5-5	11015-055	M10x25 Screw	2
1-12	11015-012	Piston Rod	1	2-10	11015-030	M12x45 Bolt	1	5-6	11015-056	Shaft	1
1-13	11015-013	cylinder body	1	3-1	11015-031	Ø Steel Ball	1	5-7	11015-057	Screw	2
1-14	11015-014	Y-Seal	2	3-2	11015-032	Ball Seat	1	6-1	11015-061	Plug	1
1-15	11015-015	Busing	2	3-3	11015-033	Spring	1				

2347 Circuit Way, Brooksville, Florida, USA 34604
 Phone: (+1) 352-799-1111 Toll Phone: (+1) 877-775-4AME (4263)
 Fax: (+1) 352-799-1112 E-mail: sales@ameintl.net www.ameintl.net